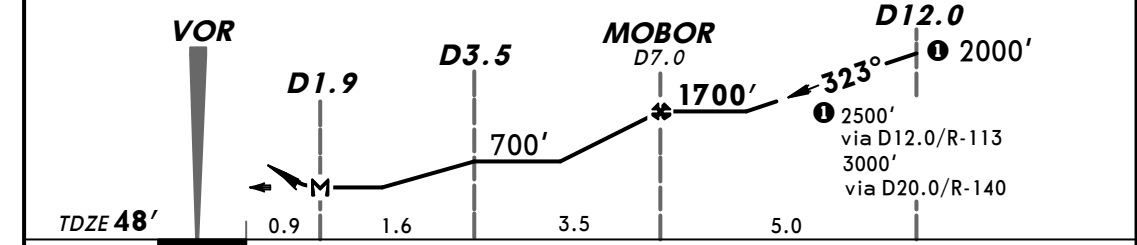
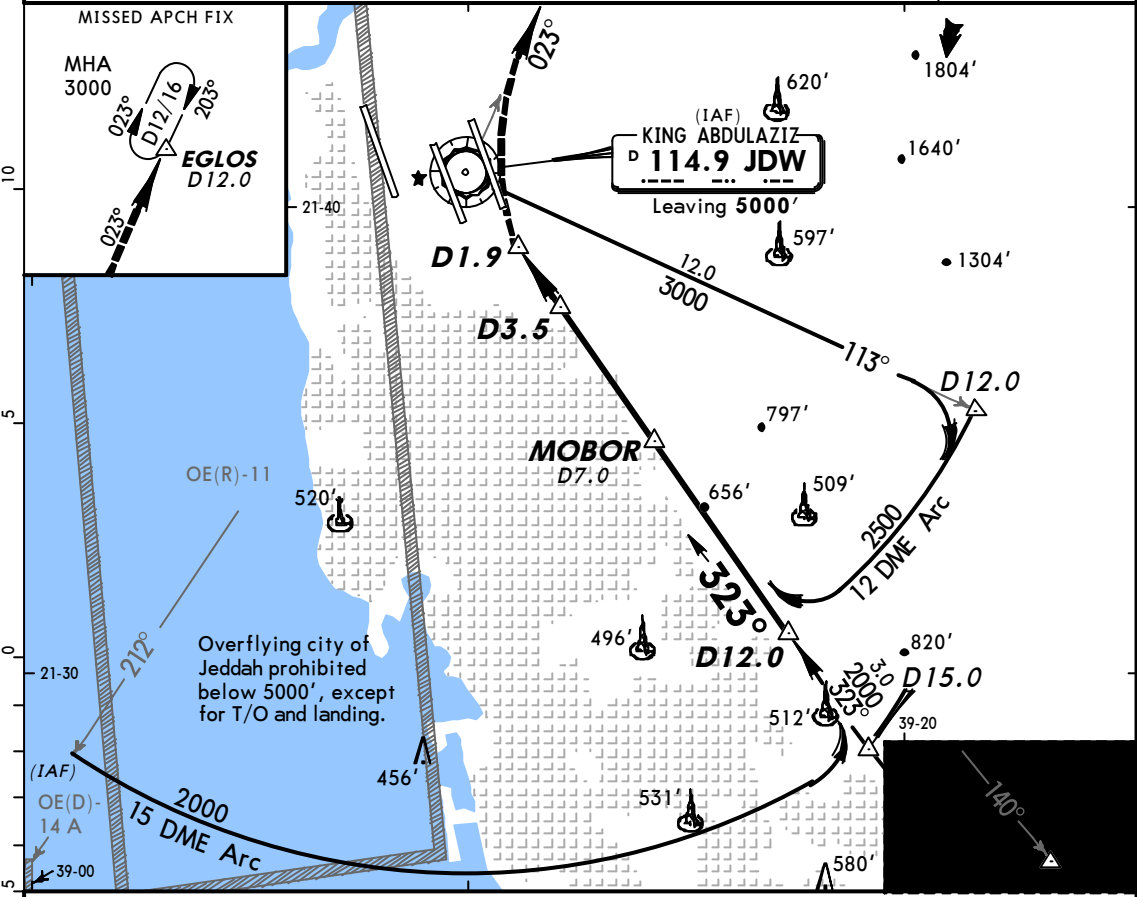
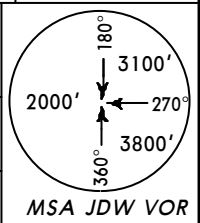


BRIEFING STRIP™	ATIS 114.9	JEDDAH Approach(R) (APP) 124.0	(Final apch) 123.8	JEDDAH Tower 118.2	Ground 121.6
	VOR JDW 114.9	Final Apch Crs 323°	Minimum Alt MOBOR 1700'	MDA(H) 500' (452')	Apt Elev 48' TDZE 48'
MISSED APCH: Climbing turn RIGHT via R-023 to 3000' direct to EGLOS/D12.0 and hold, or as directed.					
Alt Set: hPa TDZ Elev: 2 hPa Trans level: FL 150 Trans alt: 13000' Final apch track offset 15° from rwy centerline.					



MAP at D1.9				HIALS	3000'	JDW
				VASI	RT	via 114.9
						R-023

STRAIGHT-IN LANDING RWY 34R			CIRCLE-TO-LAND		
MDA(H) 500' (452')					
ALS out					
A	RVR 720m VIS 800m		RVR 1500m VIS 1600m	A	NOT AUTHORIZED
B				B	
C	1200m		RVR 1800m VIS 2000m	C	
D	RVR 1500m VIS 1600m		2400m	D	