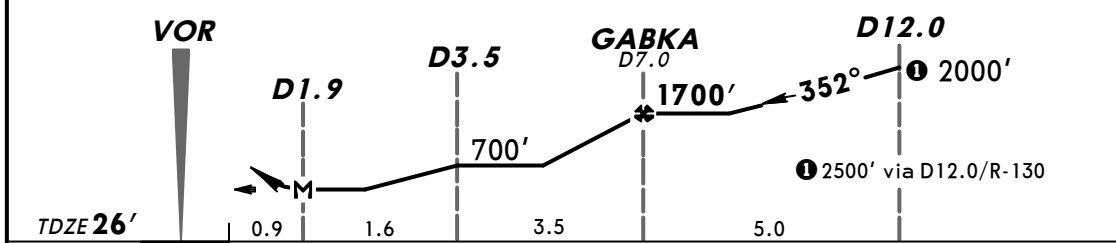
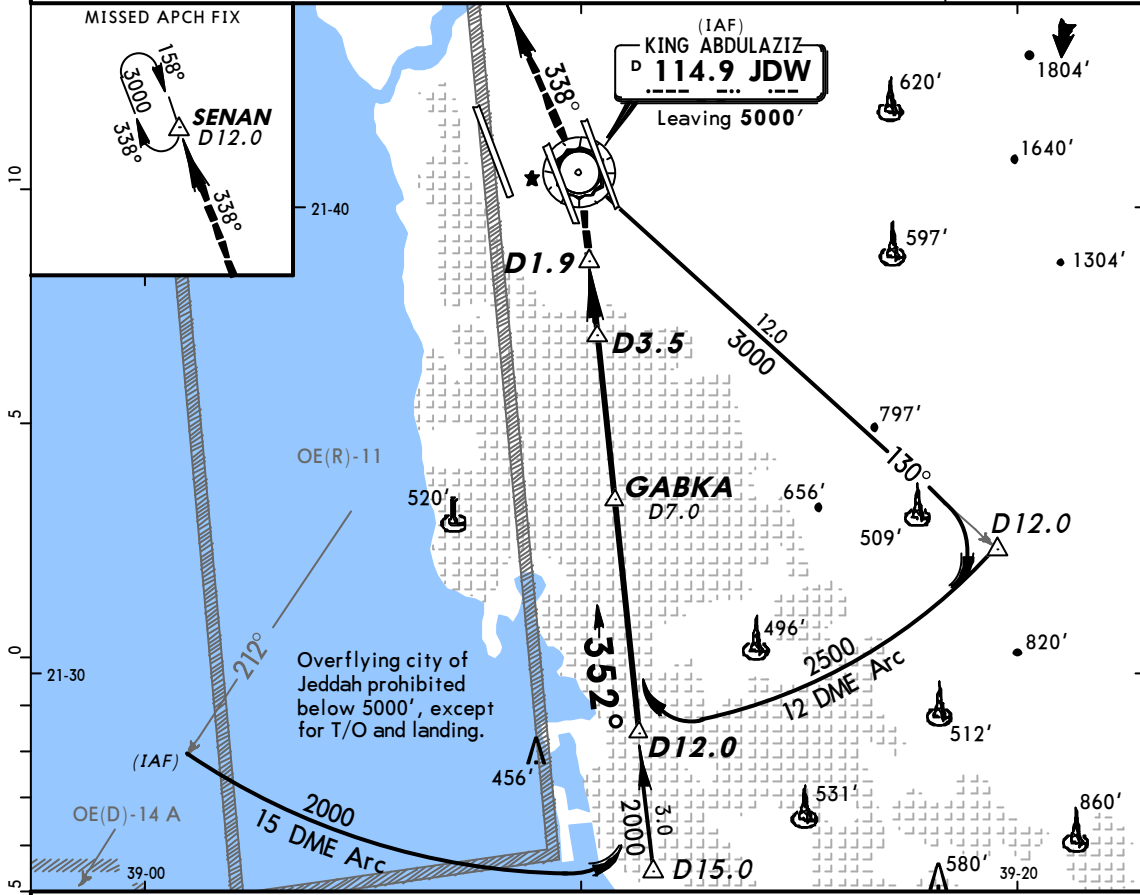


ATIS <b>114.9</b>	(Initial contact) <b>119.1</b>	JEDDAH Approach(R) (APP) <b>124.0</b>	(Final apch) <b>123.8</b>	JEDDAH Tower <b>118.2</b>	Ground <b>121.6</b>
VOR JDW <b>114.9</b>	Final Apch Crs <b>352°</b>	Minimum Alt <b>GABKA</b> <b>1700'</b>	MDA(H) <b>420' (394')</b>	Apt Elev <b>48'</b> <b>TDZE 26'</b>	
<b>MISSED APCH: Climb direct to VOR, then climbing turn LEFT via R-338 to 3000' to SENAN/D12.0 and hold, or as directed.</b>					
Alt Set: hPa		TDZ Elev: 1 hPa	Trans level: FL 150	Trans alt: 13000'	
Final apch track offset 14° from rwy centerline.					MSA JDW VOR



MAP at D1.9	ALSF-II	JDW 114.9	3000'	JDW via 114.9
	VASI VASI	↑	LT	R-338

STRAIGHT-IN LANDING RWY 34C		CIRCLE-TO-LAND	
MDA(H) <b>420' (394')</b>			
ALS out			
A		A	NOT AUTHORIZED
B	RVR 720m VIS 800m	B	
C		C	
D	RVR 1500m VIS 1600m	D	
			RVR 1500m VIS 1600m
			RVR 1800m VIS 2000m

AMEND 6

CHANGES: Note. Arrival altitude.