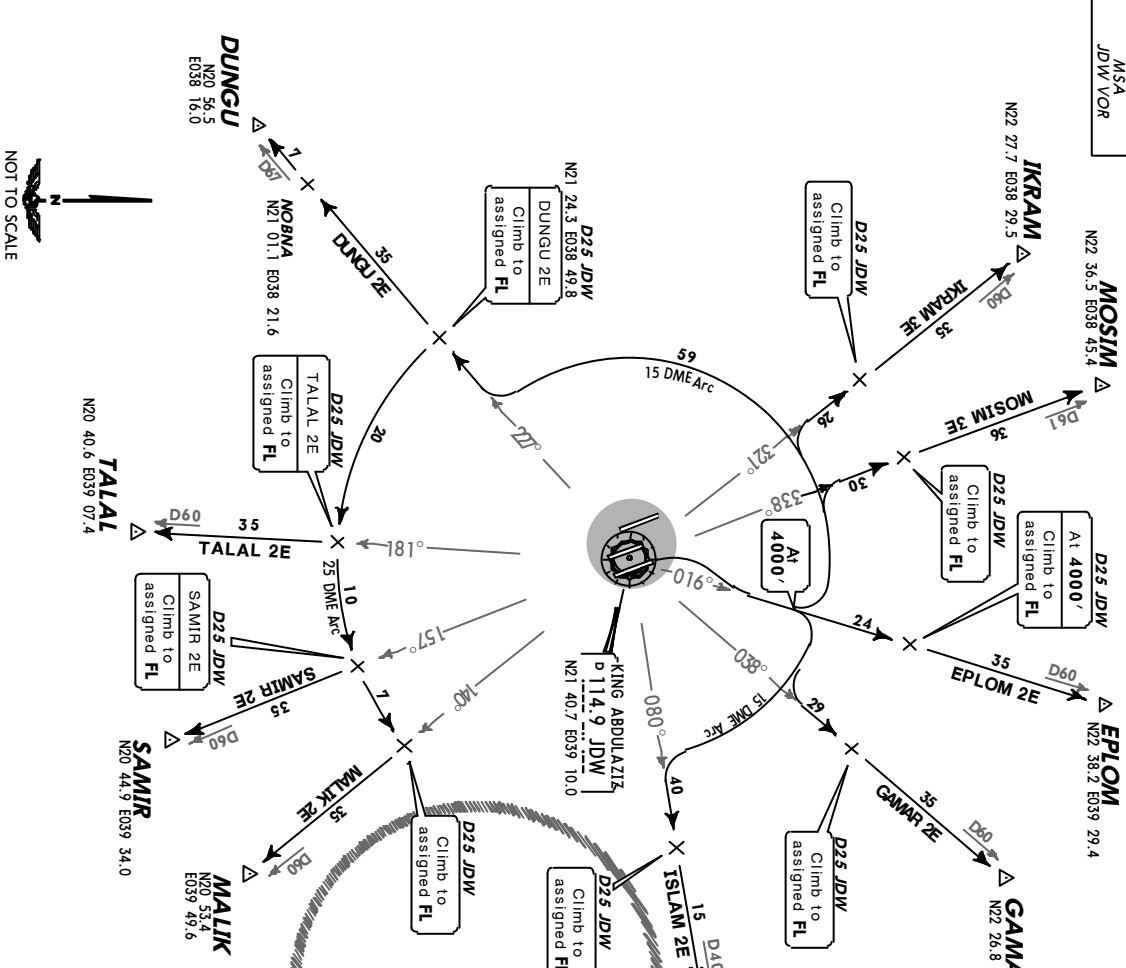
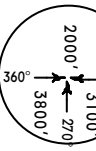


JEDDAH Approach (R) **124.0** Apt Elev **48'** Trans level: FL150 Trans alt: 13000' Contact JEDDAH Approach immediately after take-off.



- DUNGU TWO ECHO (DUNGU 2E) [DUNG2E]
- EPLOM TWO ECHO (EPLOM 2E) [EPL02E]
- GAMAR TWO ECHO (GAMAR 2E) [GAMA2E]
- IKRAM THREE ECHO (IKRAM 3E) [IKRA3E]
- ISLAM TWO ECHO (ISLAM 2E) [ISLA2E]
- MALIK TWO ECHO (MALIK 2E) [MALI2E]
- MOSIM THREE ECHO (MOSIM 3E) [MOSI3E]
- SAMIR TWO ECHO (SAMIR 2E) [SAMI2E]
- TALAL TWO ECHO (TALAL 2E) [TALA2E]
- RWY 34R DEPARTURES

These SIDs require a minimum climb gradient of 286' per nm.

Gnd speed-KT	75	100	150	200	250	300
286' per nm	358	477	715	953	1192	1430

 If unable to comply with SID advise ATIS prior to take-off.

ROUTING

SID	ROUTING
DUNGU 2E	Climb on JDW R-016 to 4000', turn LEFT, proceed along JDW 15 DME arc. Intercept JDW R-227 to DUNGU.
EPLOM 2E	Climb on JDW R-016 to 4000', maintain 4000' to D25 JDW, then to EPLOM.
GAMAR 2E	Climb on JDW R-016 to 4000', turn RIGHT, proceed along JDW 15 DME arc. Intercept JDW R-038 to GAMAR.
IKRAM 3E	Climb on JDW R-016 to 4000', turn LEFT, proceed along JDW 15 DME arc. Intercept JDW R-321 to IKRAM.
ISLAM 2E	Climb on JDW R-016 to 4000', turn RIGHT, proceed along JDW 15 DME arc. Intercept JDW R-080 to ISLAM.
MALIK 2E	Climb on JDW R-016 to 4000', turn LEFT, proceed along JDW 15 DME arc. Intercept JDW R-140 to MALIK.
MOSIM 3E	Climb on JDW R-306 to 4000', turn LEFT, proceed along JDW 15 DME arc. Intercept JDW R-338 to MOSIM.
SAMIR 2E	Climb on JDW R-016 to 4000', turn LEFT, proceed along JDW 15 DME arc. Intercept JDW R-227, turn LEFT, proceed along JDW 25 DME arc. Intercept JDW R-157 to SAMIR.
TALAL 2E	Climb on JDW R-016 to 4000', turn LEFT, proceed along JDW 15 DME arc. Intercept JDW R-227, turn LEFT, proceed along JDW 25 DME arc. Intercept R-181 to TALAL.