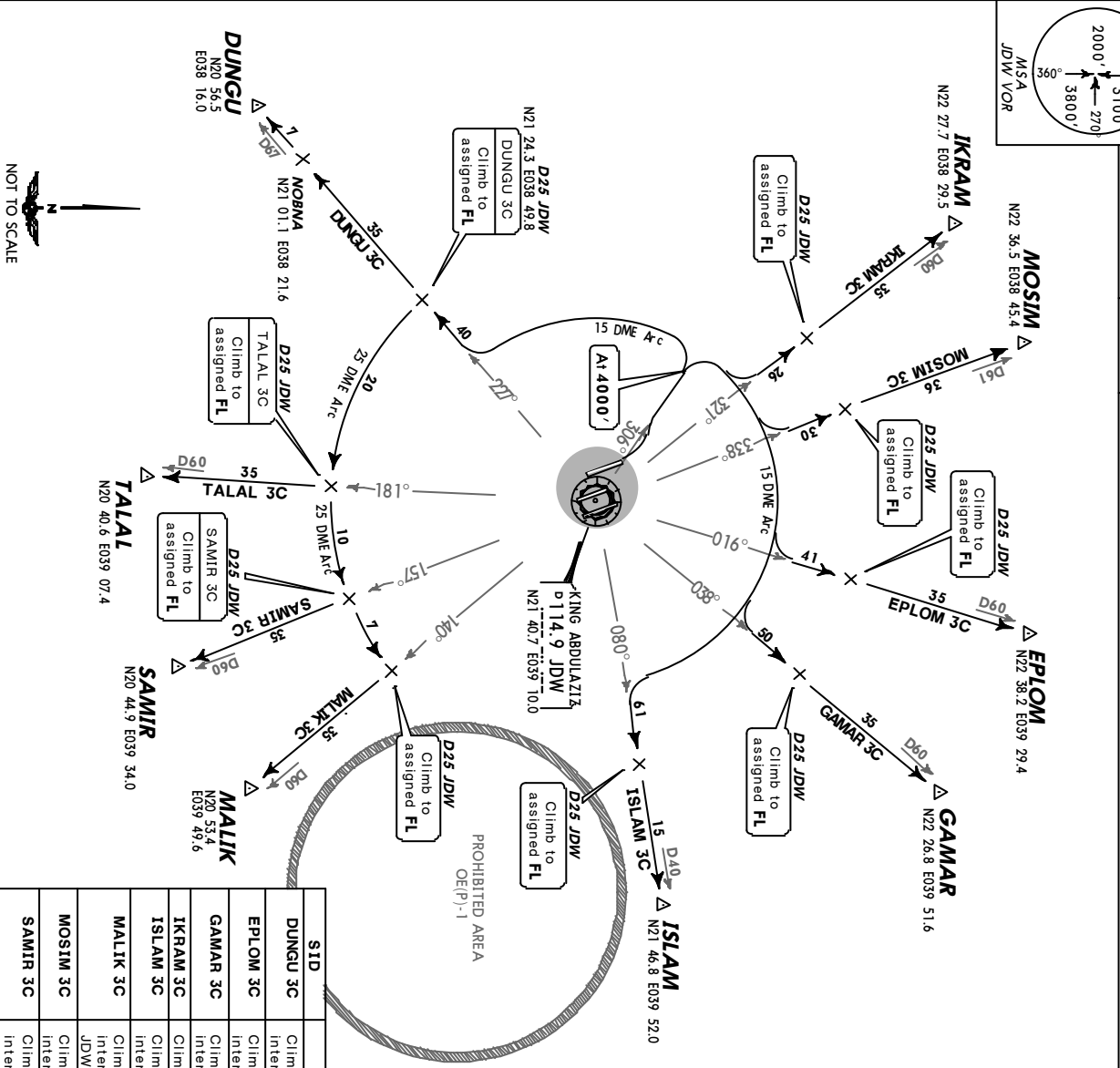
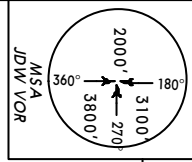


JEDDAH Approach (R) Apr' Elev 48' Trans level: FL150 Trans alt: 13000' Contact JEDDAH Approach immediately after take-off.



- DUNGU THREE CHARLIE (DUNGU 3C) /DUNG3C/
- EPLOM THREE CHARLIE (EPLOM 3C) /EPLO3C/
- GAMAR THREE CHARLIE (GAMAR 3C) /GAMA3C/
- IKRAM THREE CHARLIE (IKRAM 3C) /IKRA3C/
- ISLAM THREE CHARLIE (ISLAM 3C) /ISLA3C/
- MALIK THREE CHARLIE (MALIK 3C) /MALI3C/
- MOSIM THREE CHARLIE (MOSIM 3C) /MOSI3C/
- SAMIR THREE CHARLIE (SAMIR 3C) /SAMI3C/
- TALAL THREE CHARLIE (TALAL 3C) /TALA3C/
- RWY 34L DEPARTURES

These SIDs require a minimum climb gradient of 320' per nm.

Gnd speed-KT	75	100	150	200	250	300
320' per nm	400	533	800	1067	1333	1600

If unable to comply with SID advise ATC prior to take-off.

ROUTING

SID	ROUTING
DUNGU 3C	Climb on JDW R-306 to 4000', turn LEFT, proceed along JDW 15 DME arc, intercept JDW R-227 to DUNGU.
EPLOM 3C	Climb on JDW R-306 to 4000', turn RIGHT, proceed along JDW 15 DME arc, intercept JDW R-016 to EPLOM.
GAMAR 3C	Climb on JDW R-306 to 4000', turn RIGHT, proceed along JDW 15 DME arc, intercept JDW R-038 to GAMAR.
ISLAM 3C	Climb on JDW R-306 to 4000', turn RIGHT, intercept JDW R-321 to IKRAM.
IKRAM 3C	Climb on JDW R-306 to 4000', turn RIGHT, proceed along JDW 15 DME arc, intercept JDW R-080 to ISLAM.
MALIK 3C	Climb on JDW R-306 to 4000', turn LEFT, proceed along JDW 15 DME arc, intercept JDW R-227, turn LEFT, proceed along JDW 25 DME arc, intercept JDW R-140 to MALIK.
MOSIM 3C	Climb on JDW R-306 to 4000', turn RIGHT, proceed along JDW 15 DME arc, intercept JDW R-338 to MOSIM.
SAMIR 3C	Climb on JDW R-306 to 4000', turn LEFT, proceed along JDW 15 DME arc, intercept JDW R-227, turn LEFT, proceed along JDW 25 DME arc, intercept JDW R-157 to SAMIR.
TALAL 3C	Climb on JDW R-306 to 4000', turn LEFT, proceed along JDW 15 DME arc, intercept JDW R-227, turn LEFT, proceed along JDW 25 DME arc, intercept R-181 to TALAL.

