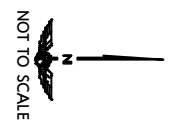
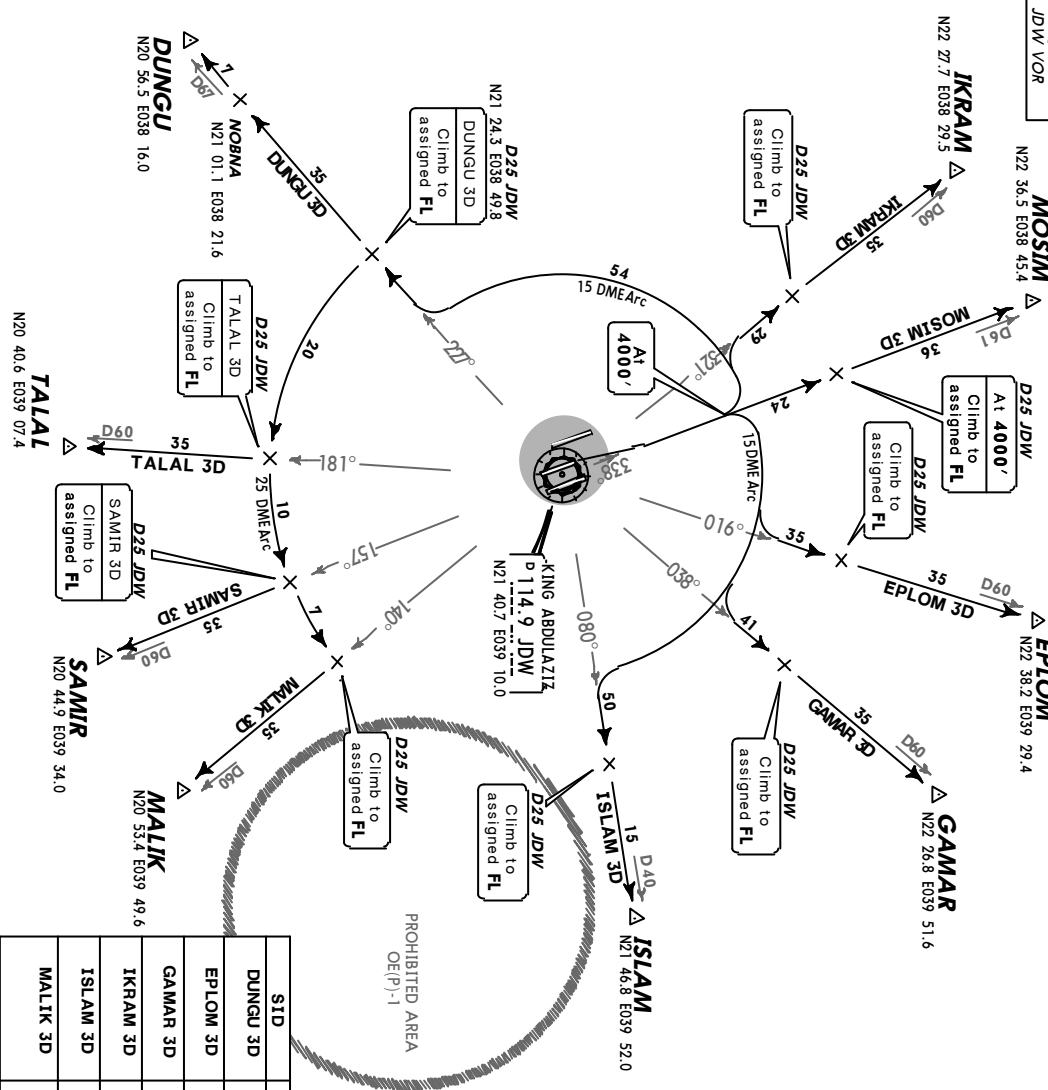
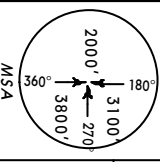


JEDDAH Approach (R) 124.0 Apt Elev 48' Trans level: FL150 Trans alt: 13000' Contact JEDDAH Approach immediately after take-off.



- DUNGU THREE DELTA (DUNGU 3D) [DUNGU3D]
- EPLOM THREE DELTA (EPLOM 3D) [EPLO3D]
- GAMAR THREE DELTA (GAMAR 3D) [GAMA3D]
- IKRAM THREE DELTA (IKRAM 3D) [IKRA3D]
- ISLAM THREE DELTA (ISLAM 3D) [ISLA3D]
- MALIK THREE DELTA (MALIK 3D) [MALI3D]
- MOSIM THREE DELTA (MOSIM 3D) [MOSI3D]
- SAMIR THREE DELTA (SAMIR 3D) [SAMI3D]
- TALAL THREE DELTA (TALAL 3D) [TALA3D]
- RWY 34C DEPARTURES

These SIDs require a minimum climb gradient of 320' per nm.
Gnd speed-KT 75 100 150 200 250 300
320' per nm 400 533 800 1067 1333 1600
If unable to comply with SID advise ATC prior to take-off.

SID	ROUTING
DUNGU 3D	Climb on JDW R-338 to 4000', turn LEFT, proceed along JDW 15 DME arc, intercept JDW R-227 to DUNGU.
EPLOM 3D	Climb on JDW R-338 to 4000', turn RIGHT, proceed along JDW 15 DME arc, intercept JDW R-016 to EPLOM.
GAMAR 3D	Climb on JDW R-338 to 4000', turn RIGHT, proceed along JDW 15 DME arc, intercept JDW R-038 to GAMAR.
IKRAM 3D	Climb on JDW R-338 to 4000', turn LEFT, proceed along JDW 15 DME arc, intercept JDW R-321 to IKRAM.
ISLAM 3D	Climb on JDW R-338 to 4000', turn RIGHT, proceed along JDW 15 DME arc, intercept JDW R-080 to ISLAM.
MALIK 3D	Climb on JDW R-338 to 4000', turn LEFT, proceed along JDW 15 DME arc, intercept JDW R-227, turn LEFT, proceed along JDW 25 DME arc, intercept JDW R-140 to MALIK.
MOSIM 3D	Climb on JDW R-338 to 4000', maintain 4000' to D25 JDW, then to MOSIM.
SAMIR 3D	Climb on JDW R-338 to 4000', turn LEFT, proceed along JDW 15 DME arc, intercept JDW R-227, turn LEFT, proceed along JDW 25 DME arc, intercept JDW R-157 to SAMIR.
TALAL 3D	Climb on JDW R-338 to 4000', turn LEFT, proceed along JDW 15 DME arc, intercept JDW R-227, turn LEFT, proceed along JDW 25 DME arc, intercept R-181 to TALAL.