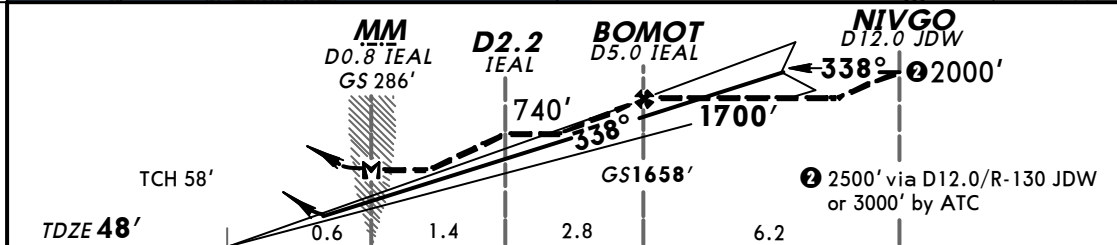
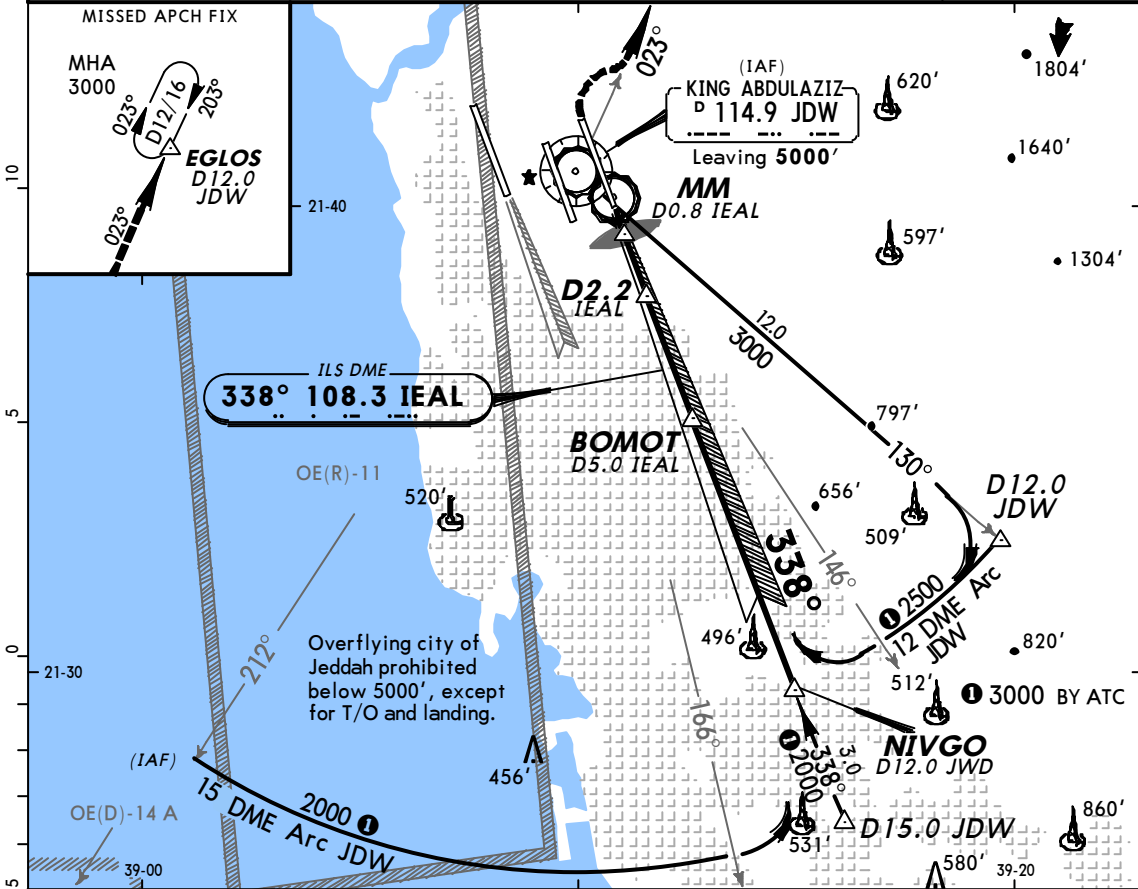


BRIEFING STRIP™	ATIS	JEDDAH Approach(R)			JEDDAH Tower	Ground
	114.9	(Initial contact) 119.1	(APP) 124.0	(Final apch) 123.8	118.2	121.6
	LOC IEAL 108.3	Final Apch Crs 338°	GS BOMOT 1658'	ILS DA(H) 248' (200')	Apt Elev 48' TDZE 48'	
MISSED APCH: Climb to 500', then climbing turn RIGHT to 3000' via R-023 JDW to EGLOS/D12.0 JDW and hold, or as directed.						
Alt Set: hPa TDZ Elev: 2 hPa Trans level: FL 150 Trans alt: 13000' Simultaneous approach authorized with rwy 34L in VMC only.						MSA JDW VOR



Gnd speed-Kts	70	90	100	120	140	160	HIALS 	500' 3000' JDW via 114.9 RT R-023	
Gs	3.00°	377	485	539	647	755			862
MAP at D0.8 IEAL									

STRAIGHT-IN LANDING RWY 34R				CIRCLE-TO-LAND	
ILS		LOC (GS out)			
DA(H) 248' (200')		MDA(H) 420' (372')			
FULL		ALS out		ALS out	
A				A	NOT AUTHORIZED
B	RVR 720m VIS 800m	1200m	RVR 720m VIS 800m	B	
C				C	
D			1200m	D	

CHANGES: Minimums.