

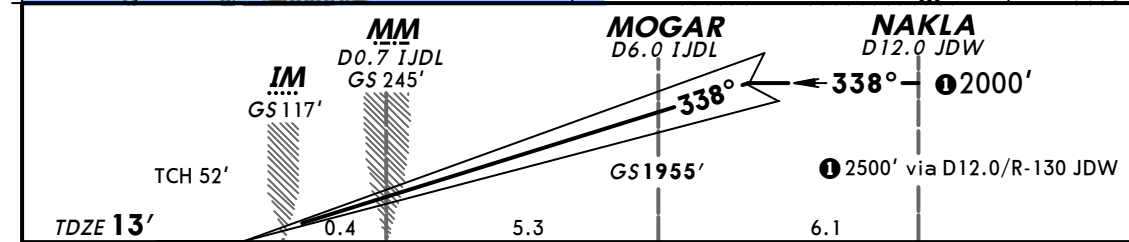
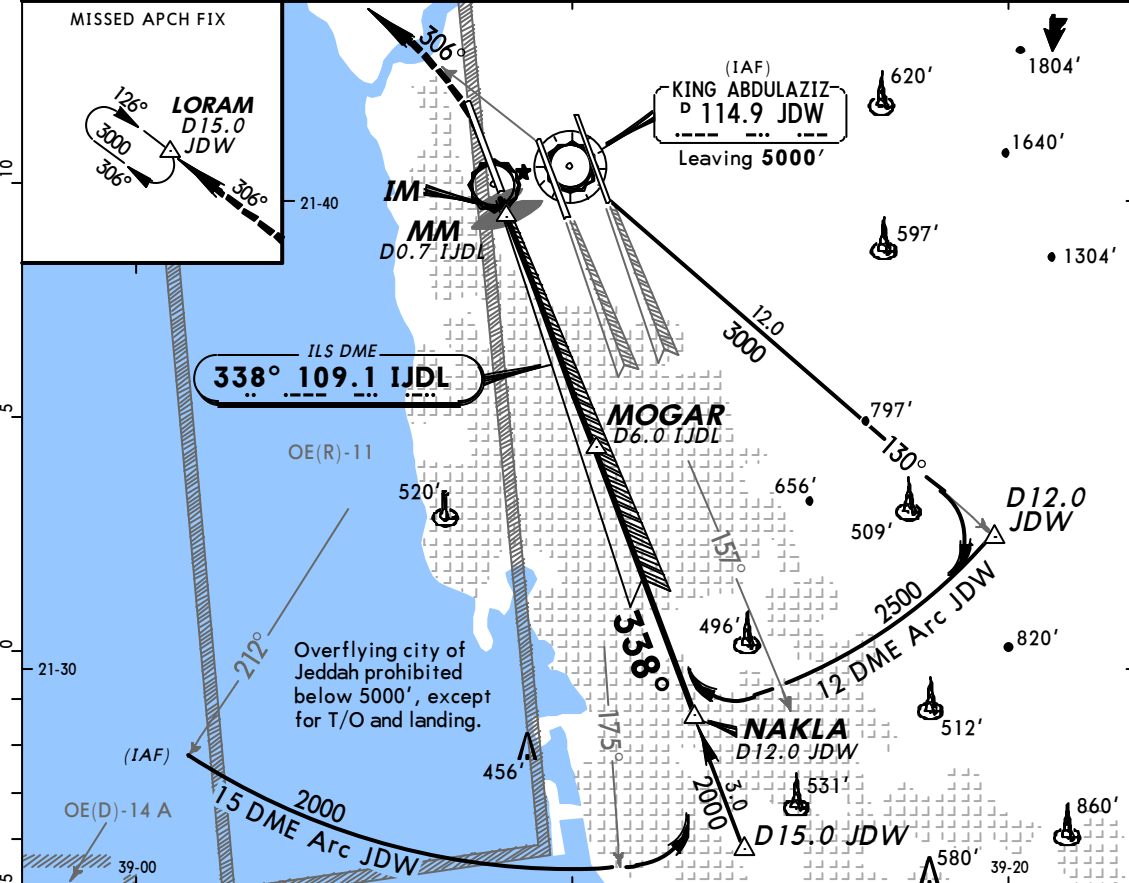
ATIS 114.9	(Initial contact) 119.1	JEDDAH Approach(R) (APP) 124.0	(Final apch) 123.8	JEDDAH Tower 118.2	Ground 121.6
LOC IJDJL 109.1	Final Apch Crs 338°	GS MOGAR 1955'	CAT II ILS RA 102' DA(H) 113' (100')	Apt Elev 48' TDZE 13'	

MISSED APCH: Climbing turn LEFT to 3000' via R-306 JDW to LORAM/D15.0 JDW and hold, or as directed.

Alt Set: hPa TDZ Elev: 0 hPa Trans level: FL 150 Trans alt: 13000'

1. Special Aircrew & Aircraft Certification Required.
2. Simultaneous approach authorized with either rwy 34C or rwy 34R in VMC only.

MSA JDW VOR



Gnd speed-Kts	70	90	100	120	140	160	ALSF-II REIL VASI VASI	3000' JDW via 114.9 LT R-306
GS	3.00°	377	485	539	647	755		

STRAIGHT-IN LANDING RWY 34L	
CAT II ILS	
RA 102' DA(H) 113' (100')	RA 152' DA(H) 163' (150')

RVR 350m	RVR 500m
-----------------	-----------------