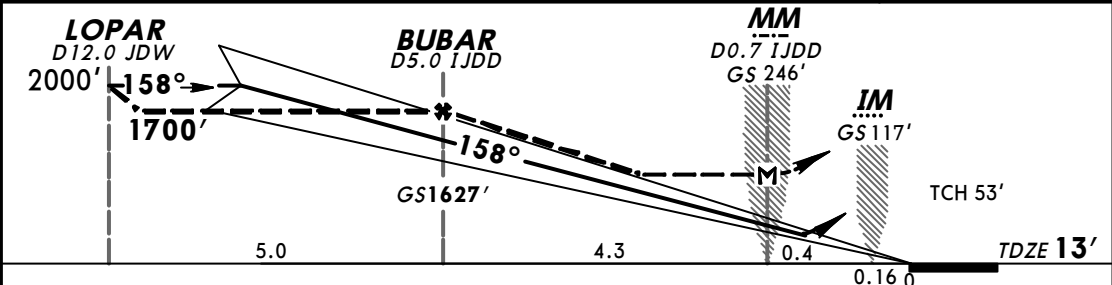
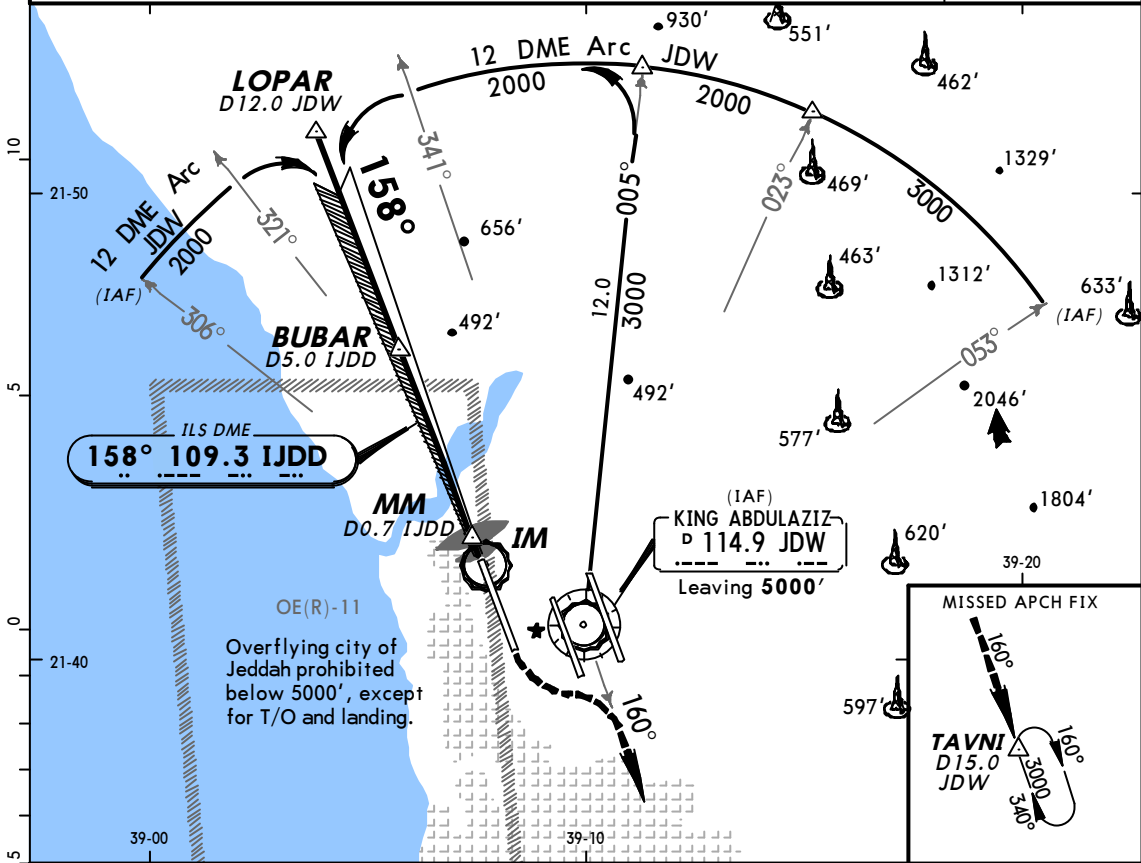


ATIS <b>114.9</b>	JEDDAH Approach(R) (Initial contact) <b>119.1</b>	(APP) <b>124.0</b>	(Final apch) <b>123.8</b>	JEDDAH Tower <b>118.2</b>	Ground <b>121.6</b>
LOC IJDD <b>109.3</b>	Final Apch Crs <b>158°</b>	GS <b>BUBAR</b> <b>1627'</b>	ILS DA(H) <b>213' (200')</b>	Apt Elev <b>48'</b> TDZE <b>13'</b>	
<b>MISSED APCH: Climbing turn LEFT to 3000' via R-160 JDW to TAVNI/D15.0 JDW and hold, or as directed.</b>					
Alt Set: hPa		TDZ Elev: 0 hPa	Trans level: FL 150	Trans alt: 13000'	
LOC unusable beyond rwy 16R threshold.					MSA JDW VOR



Gnd speed-Kts	70	90	100	120	140	160		<b>3000'</b> JDW via <b>114.9</b> <b>R-160</b>	
GS	3.00°	377	485	539	647	755			862
MAP at D0.7 IJDD									

STRAIGHT-IN LANDING RWY 16R				CIRCLE-TO-LAND	
ILS			LOC (GS out)		
DA(H) <b>213' (200')</b>			MDA(H) <b>420' (407')</b>		
FULL		TDZ or CL out	ALS out	ALS out	
A				RVR 720m	RVR 1500m
B				VIS 800m	VIS 1600m
C	RVR 550m	RVR 720m	1200m	1200m	RVR 1800m
D	VIS 800m	VIS 800m			
NOT AUTHORIZED					