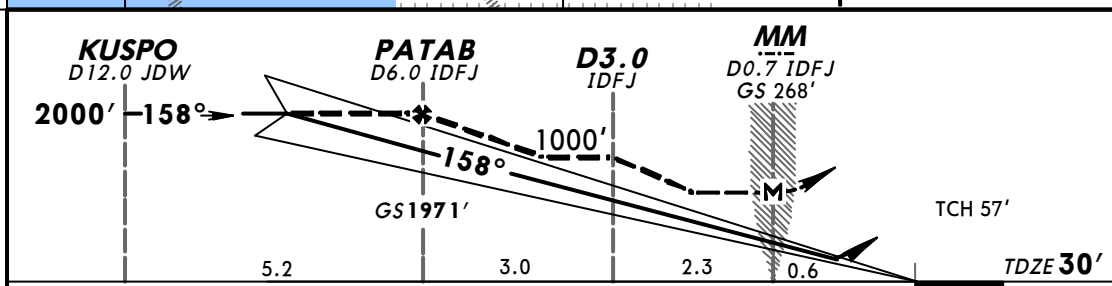
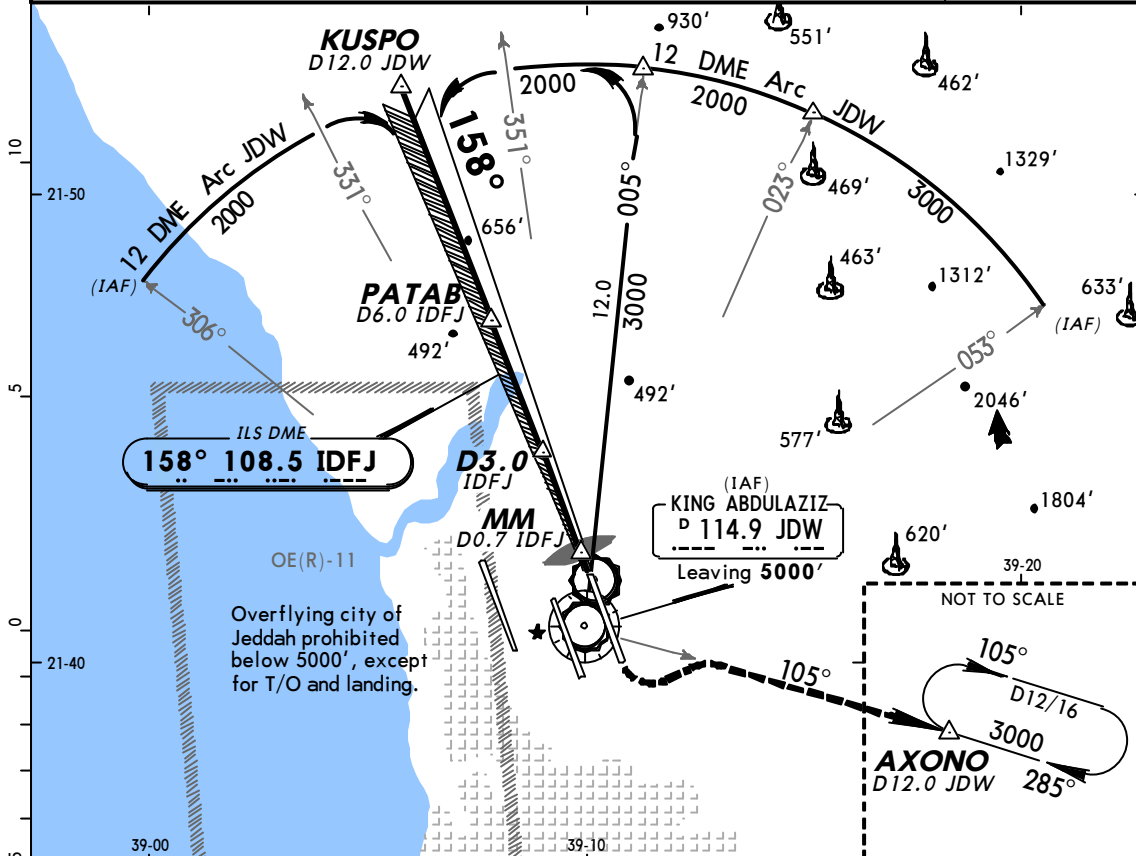
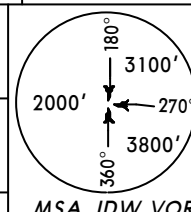


ATIS 114.9	JEDDAH Approach(R) (APP) 124.0	JEDDAH Tower 118.2	Ground 121.6
LOC IDFJ 108.5	(Initial contact) 119.1	(Final apch) 123.8	
Final Apch Crs 158°	GS PATAB 1971'	ILS DA(H) 230' (200')	Apt Elev 48' TDZE 30'
MISSED APCH: Climb to 500', then climbing turn LEFT to 3000' via R-105 JDW to AXONO/D12.0 JDW and hold, or as directed.			
Alt Set: hPa	TDZ Elev: 1 hPa	Trans level: FL 150	Trans alt: 13000'
			MSA JDW VOR



Gnd speed-Kts	70	90	100	120	140	160		JDW via 114.9 R-105 LT	
Gs	3.00°	377	485	539	647	755			862
MAP at D0.7 IDFJ									

STRAIGHT-IN LANDING RWY 16L				CIRCLE-TO-LAND	
ILS DA(H) 230' (200')		LOC (GS out) MDA(H) 420' (390')			
FULL	ALS out	FULL	ALS out		
A		RVR 720m VIS 800m	RVR 1500m VIS 1600m	NOT AUTHORIZED	
B					
C	RVR 720m VIS 800m	1200m	RVR 1800m VIS 2000m		
D		1200m			

A M E N D 4

CHANGES: IAF. Minimums.

© JEPPESEN SANDERSON, INC., 2000, 2002. ALL RIGHTS RESERVED.