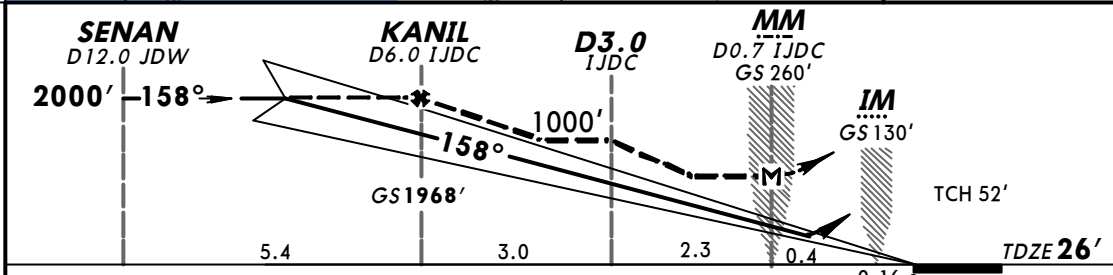
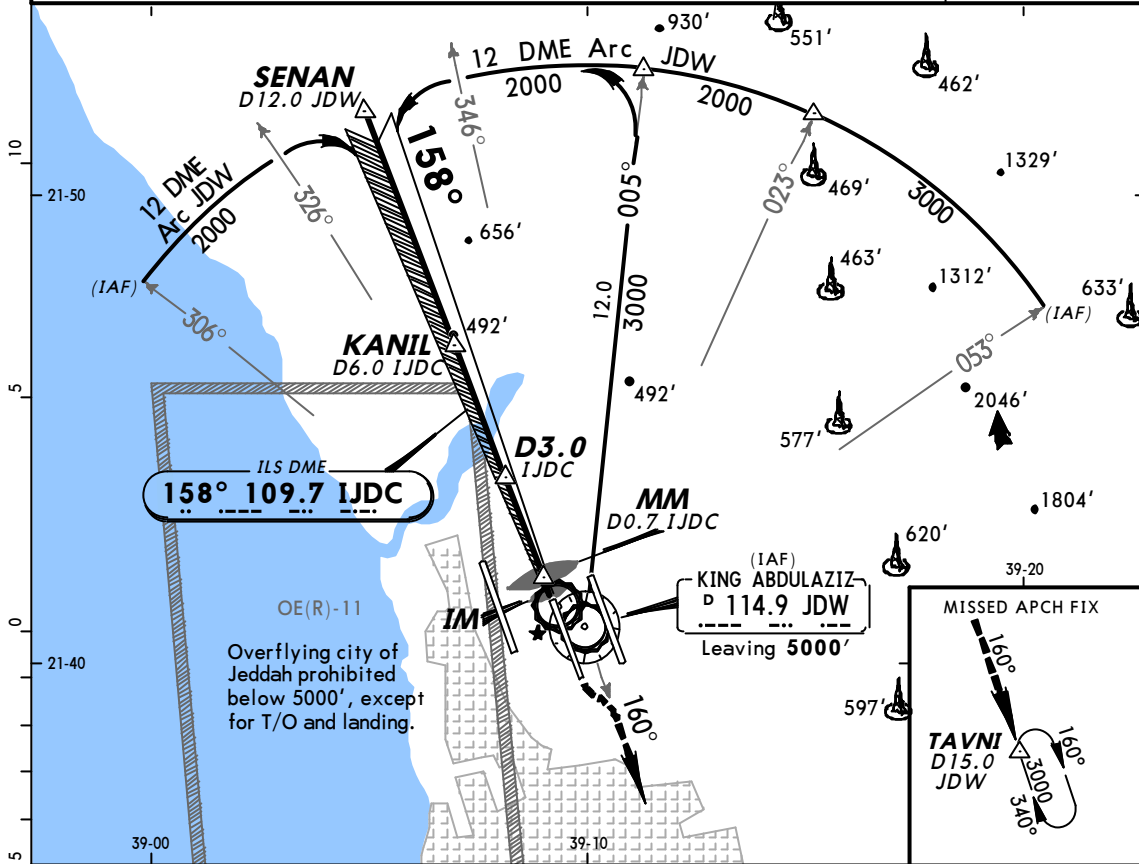


OEJN/JED
KING ABDULAZIZ INTL

JEPPESEN JEDDAH, SAUDI ARABIA
20 SEP 02 (11-1) Eff 3 Oct

ILS DME Rwy 16C

ATIS 114.9	JEDDAH Approach(R) (Initial contact) 119.1	(APP) 124.0	(Final apch) 123.8	JEDDAH Tower 118.2	Ground 121.6
LOC IJDC 109.7	Final Apch Crs 158°	GS KANIL 1968'	ILS DA(H) 226' (200')	Apt Elev 48' TDZE 26'	
MISSED APCH: Climb via R-160 JDW to 3000' to TAVNI/D15.0 JDW and hold, or as directed.					
Alt Set: hPa		TDZ Elev: 1 hPa	Trans level: FL 150	Trans alt: 13000'	MSA JDW VOR



Gnd speed-Kts	70	90	100	120	140	160		
GS	3.00°	377	485	539	647	755		862
MAP at D0.7 IJDC								

STRAIGHT-IN LANDING RWY 16C				CIRCLE-TO-LAND	
ILS			LOC (GS out)		NOT AUTHORIZED
DA(H) 226' (200')			MDA(H) 420' (394')		
FULL	TDZ or CL out	ALS out	ALS out		
A					
B	RVR 550m VIS 800m	RVR 720m VIS 800m	1200m	RVR 720m VIS 800m	RVR 1500m VIS 1600m
C				1200m	RVR 1800m VIS 2000m
D					

CHANGES: IAF. Minimums.

© JEPPESEN SANDERSON, INC., 2000, 2002. ALL RIGHTS RESERVED.