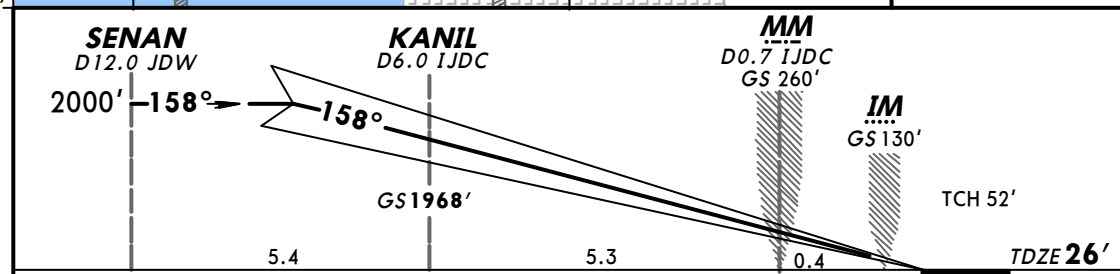
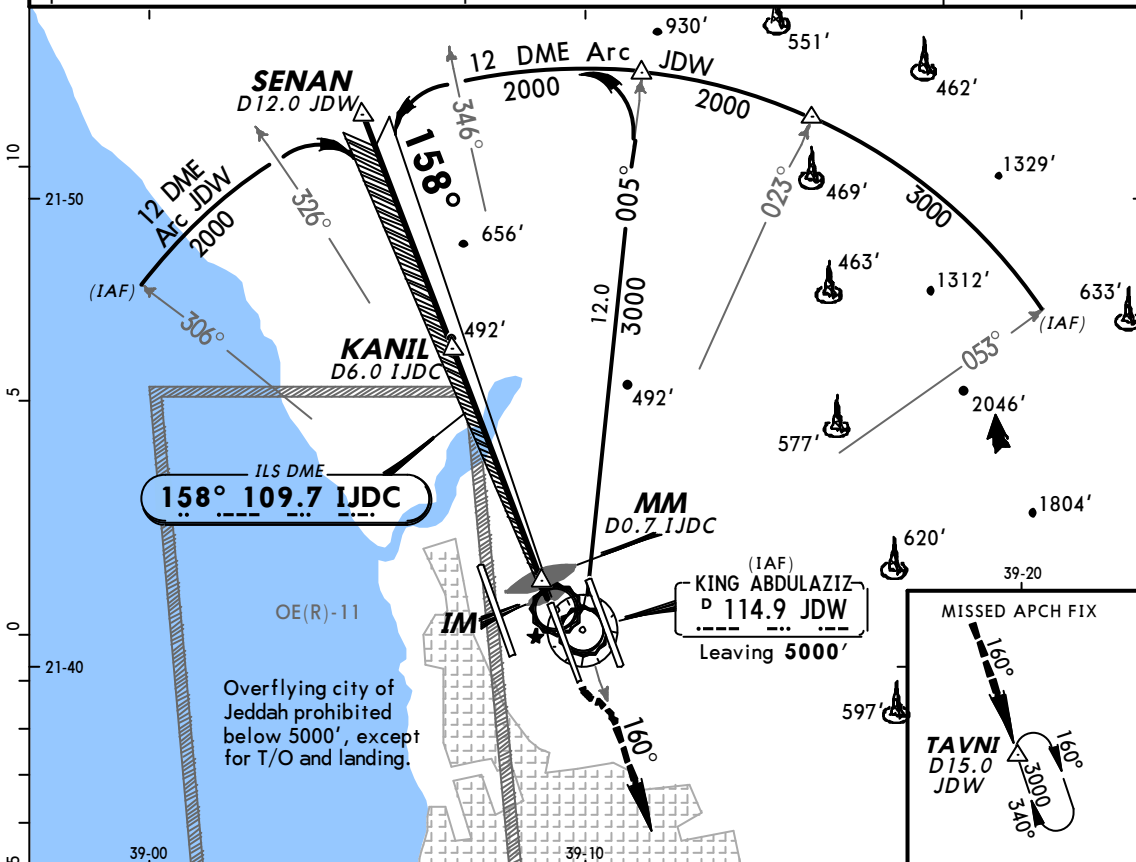


ATIS 114.9	(Initial contact) 119.1	JEDDAH Approach(R) (APP) 124.0	(Final apch) 123.8	JEDDAH Tower 118.2	Ground 121.6
LOC IJDC 109.7	Final Apch Crs 158°	GS KANIL 1968'	CAT II ILS RA 101' DA(H) 126' (100')	Apt Elev 48' TDZE 26'	
MISSED APCH: Climb via R-160 JDW to 3000' to TAVNI/D15.0 JDW and hold, or as directed.					
Alt Set: hPa		TDZ Elev: 1 hPa	Trans level: FL 150	Trans alt: 13000'	
Special Aircrew & Aircraft Certification Required.					MSA JDW VOR



Gnd speed-Kts	70	90	100	120	140	160	ALSF-II VASI VASI 3000' JDW via 114.9 LT R-160
Gs	3.00°	377	485	539	647	755	

STRAIGHT-IN LANDING RWY 16C CAT II ILS	
RA 101' DA(H) 126' (100')	RA 166' DA(H) 176' (150')
RVR 350m	RVR 500m

A
M
E
N
D
9